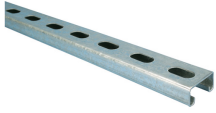
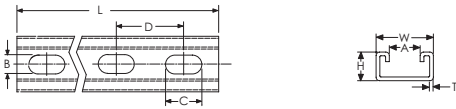


# Strut Channel Type C, Slotted



- Cold formed channel, slotted
- Strut channels for medium to heavy applications
- For individual fastening or for efficiently constructing pipe or tube routes



Material: Steel

Finish: Hot-Dip Galvanized

Part Number	Length L	Height H	Width W	Thickness T	A	B	C	D
ES4121SLOTX3.0	3,000 mm	21 mm	41 mm	2.5 mm	22.3 mm	14 mm	30 mm	50 mm
ES4121SLOTX6	6,000 mm	21 mm	41 mm	2.5 mm	22.3 mm	14 mm	30 mm	50 mm

#### WARNING

nVent products shall be installed and used only as indicated in nVent's product instruction sheets and training materials. Instruction sheets are available at [www.erico.com](http://www.erico.com) and from your nVent customer service representative. Improper installation, misuse, misapplication or other failure to completely follow nVent's instructions and warnings may cause product malfunction, property damage, serious bodily injury and death and/or void your warranty.

© 2019 nVent All rights reserved

nVent, nVent CADDY, nVent ERICO, nVent ERIFLEX and nVent LENTON are owned by nVent or its global affiliates.

All other trademarks are the property of their respective owners. nVent reserves the right to change specifications without prior notice.

